

CERTIFICATE OF LOCATION OF GOVERNMENT CORNER

North Quarter Corner of Section 15, Township 108N., Range 40 W., 5th P.M.

STATE OF MINNESOTA, County of Murray

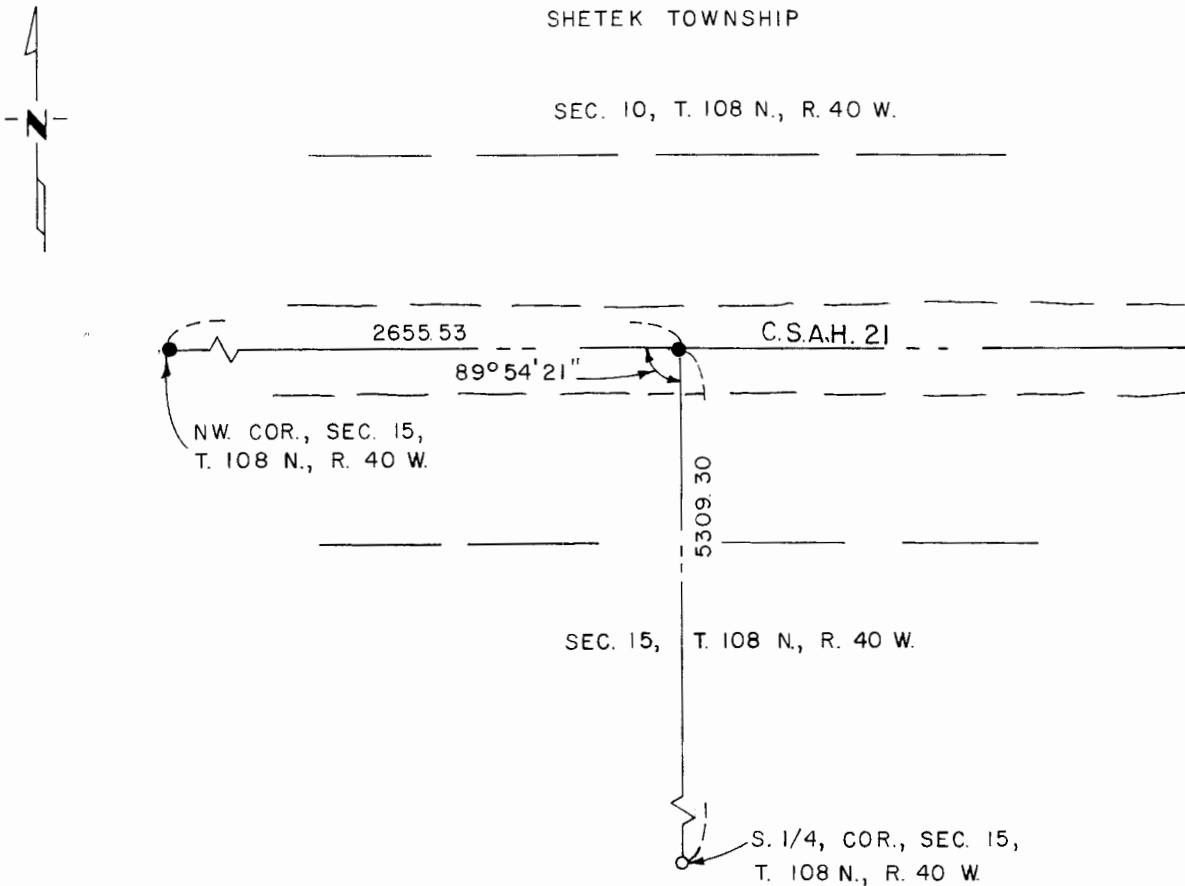
At the corner location shown on the sketch:

- On Sept. 5, 1980 found a 1/2" iron bar per Co. records; iron bar is on the center line of C.S.A.H. 21.
DATE
- left monument as found, lowered monument, removed monument (explain)
- On _____ placed a _____
DATE

SKETCH OF REFERENCE TIES

SHETEK TOWNSHIP

SEC. 10, T. 108 N., R. 40 W.



I hereby certify that this document and the data contained herein was prepared by me or under my direct supervision.

[Signature] 12/25/81
SIGNATURE DATE

Registration No. 12967

- Land Surveyor, Professional Engineer
- County Surveyor, County Engineer

OFFICE OF THE COUNTY RECORDER

County of Murray

I hereby certify that this document was filed in the Co. Recorders office at 10 A.M. on the 18th day of February A.D., 1982

County Recorder Willard W. Ohme

By _____, Deputy

DOCUMENT NO. _____